



Interpath
Services

Capability Statement 2025



SALES CHANNEL

- Worldwide business to business distribution
- £12.0bil revenue in 2022
- De-centralised model (Global scale, local management)

PRODUCT SECTORS

FOOD SERVICE	GROCERY	CLEANING & HYGIENE	RETAIL	SAFETY	HEALTHCARE

SOURCING

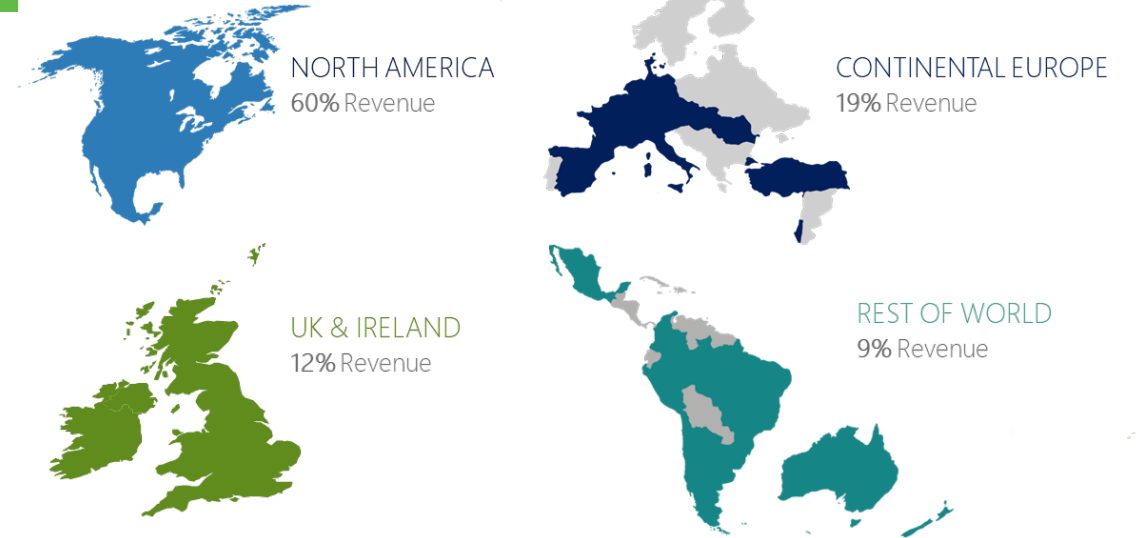
- Leading brand manufacturers
- Own brands
- Suppliers audited to SMETA 2 standard
- Compliance to Bunzl CSR and Ethical Sourcing Policies

FOOTPRINT

- 21,000+ employees
- Companies in 32 countries across five continents

FINANCIALS

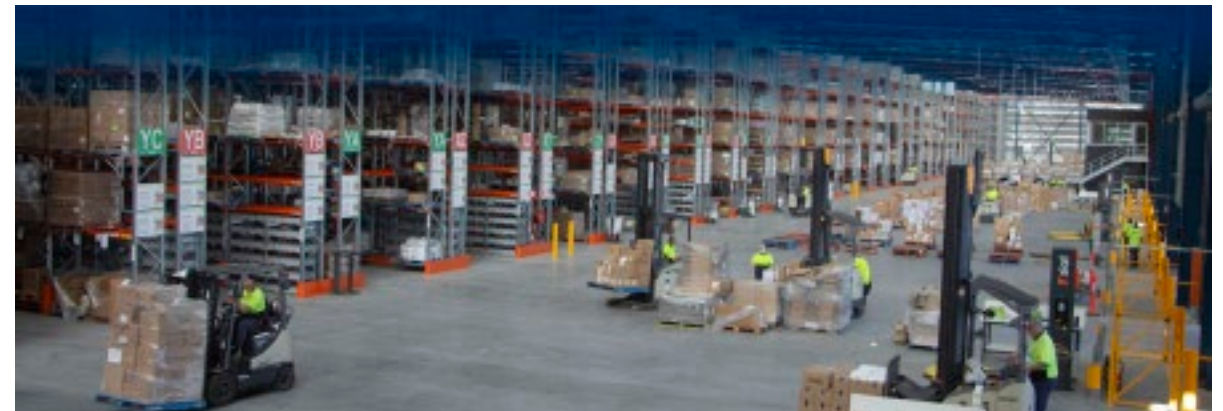
- Head office in London
- Listed on the London Stock Exchange
- FTSE 100, Support Services sector



Operating in
32 countries

+600
Locations

+21,000
Employees globally



Our sustainability strategy consists of four pillars that align with our business and the UN's Sustainable Development Goals:

Supply Chain; Products & Customers; People & Community; and Environment & Climate Change and include specific targets to ensure meaningful impact.



BUNZL SUSTAINABILITY STRATEGY



SUPPLY CHAIN

Embedding responsible and ethical practices

- Responsible sourcing
- Human rights and modern slavery
- Standards and certifications



PEOPLE & COMMUNITY

Ensuring a culture where everyone counts

- Diversity and inclusion
- Health & safety
- Indigenous engagement
- Charitable giving



PRODUCTS & CUSTOMERS

Transitioning to a circular economy

- Circular economy
- Product stewardship
- Innovation
- Transition planning



ENVIRONMENT & CLIMATE CHANGE

Minimising our emissions and waste

- Energy and emissions
- Waste to landfill & Plastic pollution
- An established Policy central to our ISO14001 Environmental Management System



RECENT AWARDS

2023 FINALIST in the Banksia Foundation Sustainability Awards
2023 WINNER of the Packaging Innovation and Design Award (PIDA) for OzHarvest (supporting food waste & world hunger).



In addition to ISO International Audit Standards, all suppliers and their factories must adhere to Bunzl's strict Ethical Sourcing Policy. Our approach is one of complete transparency and continuous improvement.

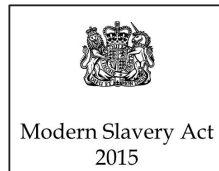


We have a dedicated team in Bunzl Shanghai that continually audit and monitor our international suppliers & procurement process

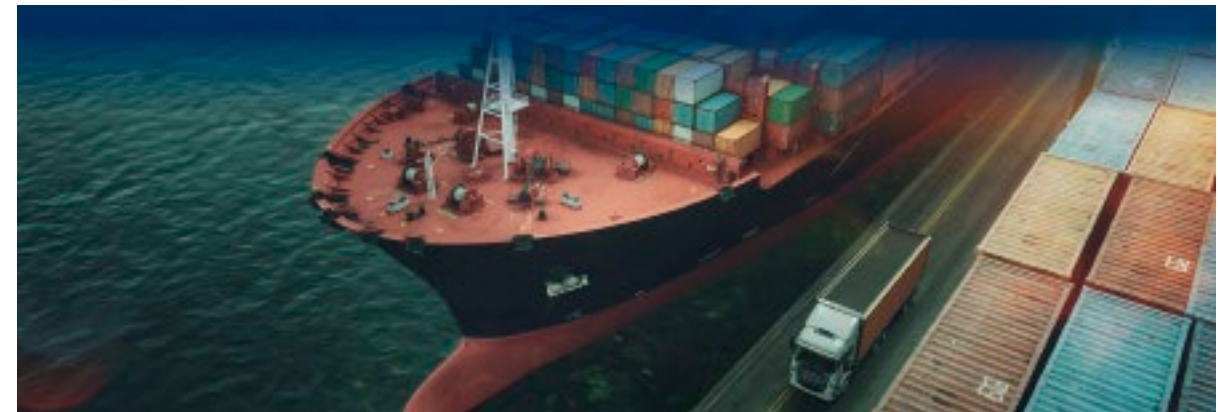
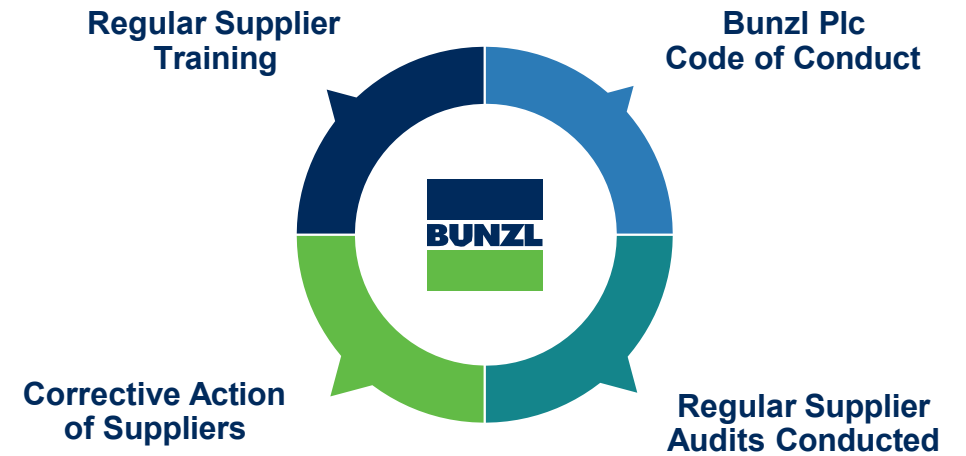
ZERO TOLERANCE POLICY

Bunzl's Mandate to Sourcing Ethically

- 1 No Child Labour
- 2 No Forced Labour
- 3 No Unfair Discrimination
- 4 Wage Should Meet The Local Minimum Requirements
- 5 No Continuous Working Without Rest For More Than 30 Days



MANAGING OUR SUPPLY CHAIN



Retail Packaging	PPE	Specialised fire / Rescue PPE – Clothing	Bunding & Spill Containment	Sanitiser & Hygiene kits	Medical Consumables	Woundcare	Orthopaedic Equipment & Accessories	Aged Care Consumables	Cleaning Accessories	Protective Packaging
Food Packaging	Workwear	Vehicle Extraction	Craneable Boxes & Cages	Culture Medium & Petri Dishes	Education	Specialised Surgical Equipment	Medical Tapes & Therapy Garments	Medical Consumables	Chemicals	Washroom & Cleaning Supplies
Food Processing Equipment	Footwear	Confined Space Equipment	Dangerous Goods Storage	Bioscience consumables	Medical Furnishings	Patient Care & Positioning Devices	Compression & Vein Therapy Devices	Limb Protection Equipment	Guest Amenities	Cardboard & Plastic Packaging
Food Handling Supplies	Lifting & Rigging/ Materials Handling	First Aid / Medical	High Density Parts Storage	Safety Eyewear	Medical Equipment	Orthotics	Ophthalmic Diagnostic & Surgical Equipment	Respiratory & Oxygen	Hand & Skin Care	Tapes & Adhesives
Cleaning Products & Equipment	Load Restraint/ Vehicle Recovery	Firefighting Equipment	Shelving Systems & Accessories	Blood Collection	Nursing Supplies	Molecular Imaging Equipment		Woundcare	Machinery	Industrial Abrasives, Lubricants, Oils & Marine
Medical Consumables	Height Safety	Rope Rescue / Fall Arrest	Storage Cages / Pallet Systems	Liquid Management	Scrubs & Shoes	Healthcare Safety Solutions & Infection Control		Nutritional Supplements	Paper Products	Food Service Supplies
Personal Care Supplies	Site Safety	Water & Search Rescue Equipment	Trolleys	Diagnostic Consumables	Stethoscopes	Compression Therapy Devices		Oral Care Management	Washroom Dispensers	Office & Marking Products
Safety	Testing & Technical services	HAZMAT	Warehouse Equipment		Student Supplies					Health & Safety PPE

Interpath Services

Leading the way

A Bunzl Company 



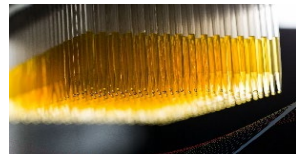
LABORATORY GLASSWARE



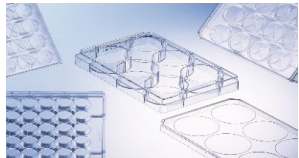
LABWARE & PPE



BLOOD COLLECTION



PIPETTES



CELL CULTURE PLATES



DISHES & CULTURE TRAYS

15 Fillo Drive, Somerton VIC 3062

 (03) 9056 5300

interpath.com.au

COMPANY OVERVIEW & CAPABILITIES

CAPABILITIES

Interpath Services Pty Ltd is a market leader in the Australian Scientific Industry, specialising in the sale and distribution of Life Science Consumables for the Pathology, Hospital, Medical Research and Scientific markets.

The underlying Interpath philosophy of providing exceptional quality and service, combined with the dedication of Interpath's staff has made our company one of the most respected and successful Life Science Supply companies in Australia

Our distribution and support capabilities include:

- National technical representation in every state with a purpose-built, state of the art 6000 m² facility in Melbourne
- Strong supply chain and logistic capabilities
- Sales and customer service team expert



PRODUCT & SERVICE SPECIALISATION

SPECIALISATION

Interpath represent some of the world's leading manufacturers of Life Science products across the following categories.

Product Categories:

- Blood Collection and accessories
- Glassware
- Diagnostic UTM Swabs
- Specimen bags
- Cell culture medium
- Petrie dishes and tubes
- Laboratory filtration
- Labware and PPE

We engage directly through collaboration with our customers, which includes direct training and ongoing technical support by our team. Our specialist knowledge, strong supply chain and our logistical capabilities ensures our customers can focus on their core business requirements.

KEY CUSTOMERS

CUSTOMERS

We provide Life Science Consumables for:

- Biotechnology (Asurequality)
- Hospitals (Major state based Public Hospital networks)
- Research (CSIRO, Peter Mac Cancer Institute)
- Private Pathology (Sonic Health, Aust Clinical Labs, Healius)
- Universities (NSW, Monash, Melbourne, QLD, SA)



ACCREDITATIONS & INITIATIVES

ACCREDITATIONS



Quality Assured

ISO 9001 accreditation for local manufacturing and testing.



Environmental Management System

As part of the Bunzl Group, has an established Environmental Policy, which is a central component of our ISO14001 Environmental Management System.



International Organization for Standardization (ISO)

ISO is an independent, non-governmental international organisation. It brings together experts to share knowledge and develop voluntary, consensus-based, market relevant International Standards that support innovation and provide solutions to global challenges.

Interpath Services

Speciality Healthcare

Interpath Services, a part of the Bunzl Group, is a market leader in the Australian Scientific Industry, specialising in the sale and distribution of Life Science Consumables for the Pathology, Hospital, Medical Research and Scientific markets. We represent some of the world's leading manufactures who specialise in these markets.

Our foundation philosophy is to provide exceptional service, specialist advice, training and education to support your busienss and delivered in market by our highly trained industry expert team.

Making our company one of the most respected and successful Life Science supply companies in the market.





TRUSTED... TO DELIVER

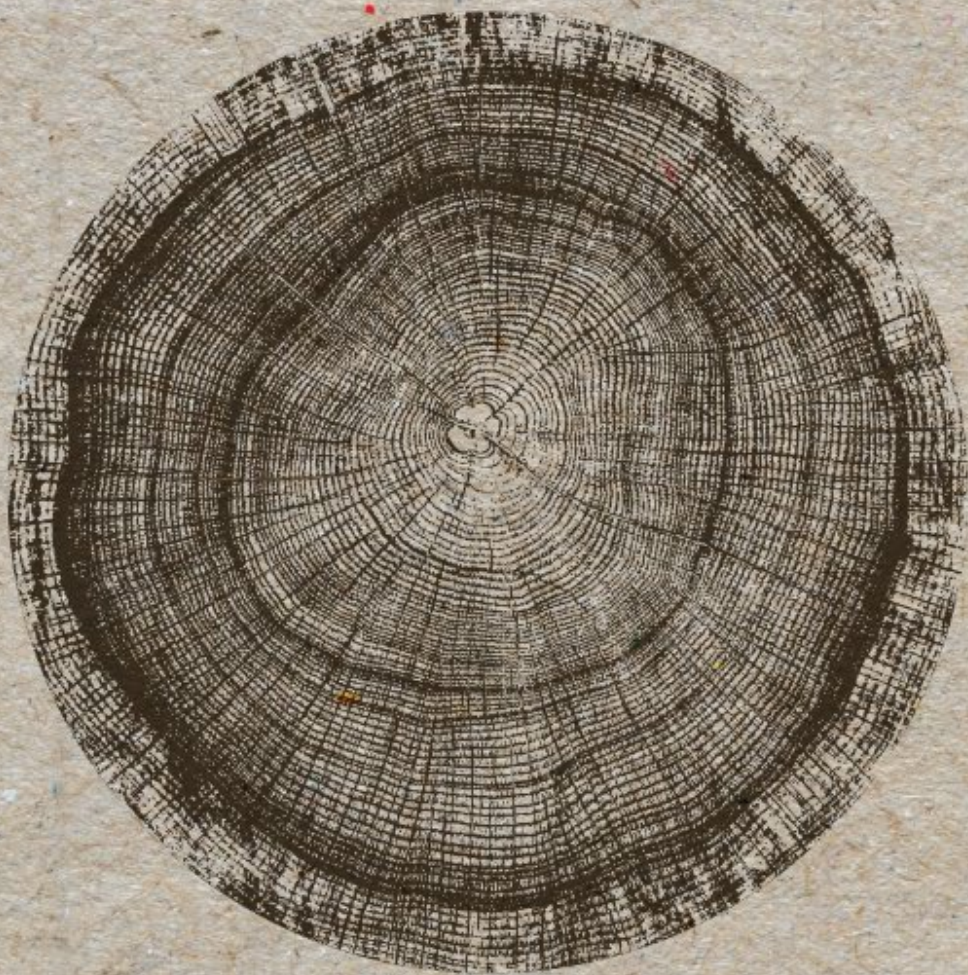
OUR GLOBAL SUPPLY CHAIN BRINGS LOCAL BENEFIT

Our purpose is to deliver essential business solutions and create long term sustainable value for the benefit of our customers.

Our customers trust us to deliver the innovative products, solutions and insights that help them run their businesses more efficiently and sustainably.

Our employees value our customer-focused and inclusive culture.

That's why the Bunzl difference is essential.



RESPONSIBLE SOURCING

SUPPLY CHAIN

We are committed to working with all our product suppliers to ensure that adequate standards and transparency are maintained in all areas of corporate responsibility. They are expected to meet the same internationally recognised human rights, environmental and quality standards that we expect of our own business.

Our approach ensures products are manufactured and sourced responsibly. Our Ethical Sourcing Policy sets out the framework that ensures we source products in an ethical and consistent manner while working with suppliers to improve their social and environmental practices. A key element is our Supplier Code of Conduct that defines the principles and standards we expect suppliers to understand and adhere to.



ELIMINATING MODERN SLAVERY

RESPECTING HUMAN RIGHTS

Bunzl recognises modern slavery is a global issue that requires global action. As an international business, we are wholly committed to eliminating modern slavery practices and respecting human rights across both our own operations and throughout our supply chain.

We support our customers and suppliers alike to eliminate modern slavery by conducting in-country audits using their own responsible sourcing team. Our customers can be assured of our commitment to responsible and ethical sourcing and that our approach to auditing and assurance are firmly focused on workers' rights.

We are taking steps to ensure that slavery and human trafficking is not taking place in our supply chain or in any part of our business. Bunzl has:

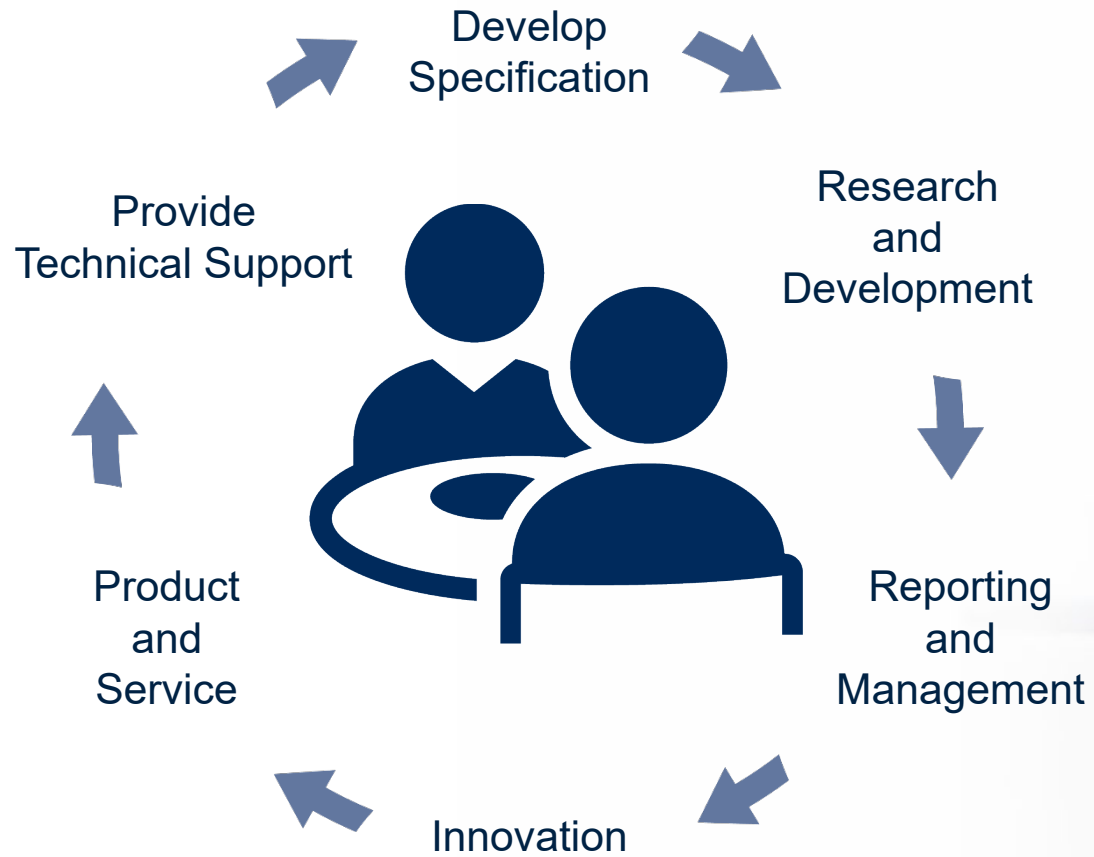
- zero tolerance for unethical behaviour
- zero tolerance for child labour, forced labour and unethical practices
- zero tolerance for unfair discrimination, below minimum wages and continuous work without rest.

At Bunzl we believe that everyone is entitled to safe and decent work.

Our Supporting Partners



Agency and Customer Engagement



Technical Representation



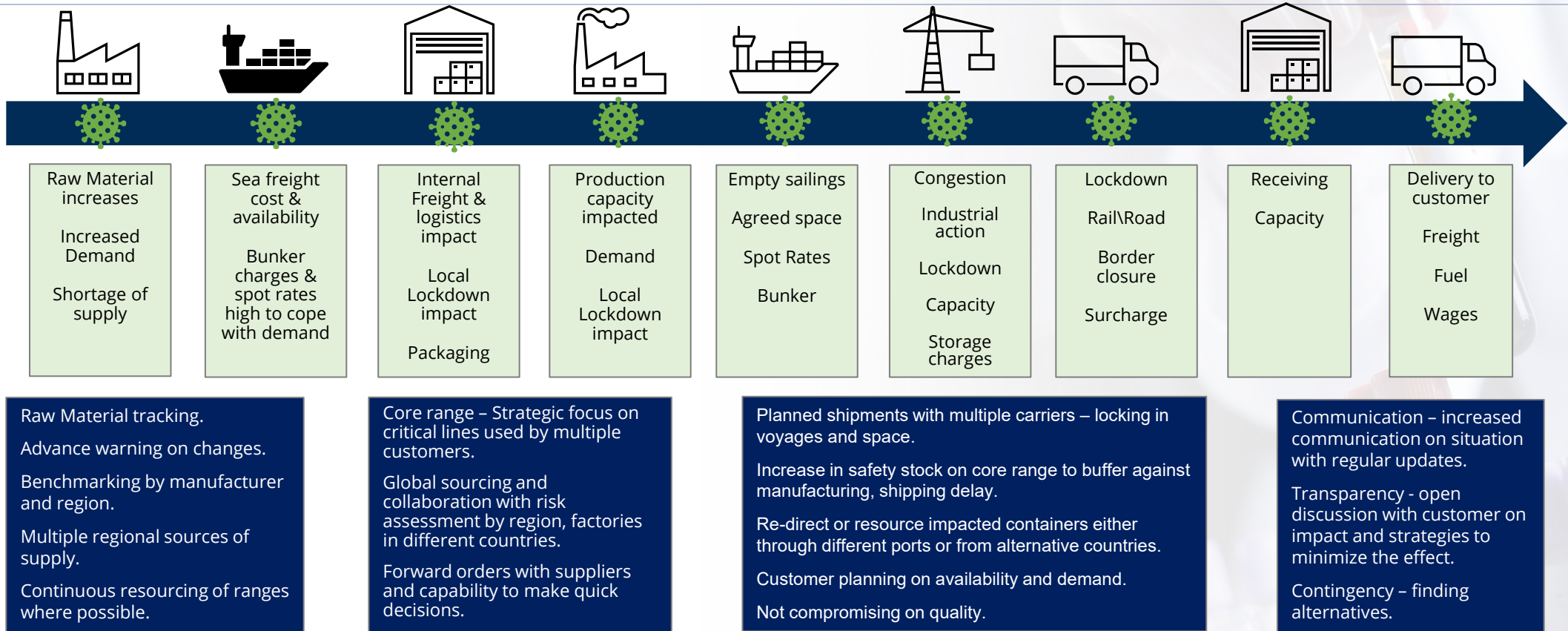
National Distribution Centre

Melbourne, Australia



- New purpose-built 6,000 square metre warehouse facility upgraded in October 2022
- 2000 pallets spaces
- State of the art layout and automation
- Additional capacity available for growth + 7 years
- Direct import capabilities with container docking
- Product batch management and integrated inventory management forecasting.
- Access to satellite warehouses within each capital city to supply locally.

Managing Supply Chain Risk



What Interpath Services is doing to manage continuity of supply